

## Designer Style Keystone Inserts

These inserts are intended for use with Designer style covers and may be installed by themselves or ganged in a multi-gang electrical box. They can be used with Keystone telephone jacks, network jacks, BNC connectors, "F" connectors, and Audio connectors. The mounting hole is the standard keystone cutout (.58" X .76"). Choose from 1, 2, 3, 4, or 6 ports, color is white.

1 Port



No. 72-5051

2 Ports



No. 72-5052

3 Ports



No. 72-5053

4 Ports



No. 72-5054



6 Ports



No. 72-5056



## Wall - Plate Adaptors

These adaptors can be used with Philmore Designer style Keystone inserts, color is white.

No. 72-5016  
"F" Insert WhiteNo. 72-5018  
Blank Insert WhiteGOLD PLATED SOLDERLESS CONNECTORS  
MOUNT IN A 3/8" (.375") HOLE

The following connectors can be used with No. 72-5016 adaptor to create a custom design. Audio & Video ports along with your Data Com ports. Also can be used with all Quick Fit™ Wall Plates

No. 45-309G - Dual "F" Conn. Female (F-81) (2/pk)  
No. 42-1081G - Extra long (1"), (2/pk)No. 45-162G - Dual RCA (F),  
(1) ea. RED + WHT + YEL  
No. 45-166G - (1) ea. RED + GREEN + BLUE  
No. 45-142G - Dual RCA (F)  
(1) ea. RED + WHT  
No. 45-163G - Orange (2/Pk)No. 45-307G - RCA Jack (F) / "F" Conn. (F)  
(1) ea. RED + WHITE  
No. 45-306G - (1) ea. RED + WHT + YEL  
No. 45-301G - (1) ea. RED + GREEN + BLUENo. 45-232G - Metal Binding Post Color coded  
(1) ea. RED + BLACKNO. 45-239G - SOLDERLESS BANANA JACK  
(1) ea. RED & BLACK

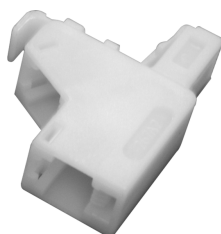
NO. 45-233 - 3.5 mm Feed - Thru Stereo Jack



## Modular Duplex Adaptor

4 Conductor (6P4C), piggy back style. One Male to two Female jacks. Wired reversed for telecommunications. Slim design for space saving.

No. 75-734



## Combo Duplex Adaptor

8 Conductor (8P8C) Male to 8 conductor Female and 2 conductor (6P2C) Female, piggy back style. 2 Conductor jack (pin 2 & 5) is connected to pin 3 & 6 of 8 conductor.

No. 75-736

